

# RACE WEEKEND PARTICIPANT GUIDE

November 12 & 13, 2022



**MONTEREY  
BAY** HALF  
MARATHON

**BY-THE-BAY 3K  
PACIFIC GROVE LIGHTHOUSE 5K**





# 2022 MONTEREY BAY HALF MARATHON

---

## EXPO & BIB PICK UP

Pick up your race bib with attached timing tags, participant shirt, and gear check bag (optional) at the Health & Fitness Expo on Friday, November 11th, or Saturday, November 12th. The Expo is located at the Monterey Conference Center, 1 Portola Plaza, Monterey. A photo ID is required for pick up. Hours are noon to 6 PM on Friday and 9:30 AM to 6 PM on Saturday. No dogs allowed at the Expo in the Monterey Conference Center (except service animals). For a detailed list of Expo events and activations, [click here](#).

You will be emailed a check-in pass QR code associated with your registration. When you arrive at bib pick up, a volunteer will scan your QR code pass and verify your identity via your driver's license or other form of government-issued ID.

You must pick up your bib and race packet in person; no one else can pick up for you unless a [Packet Pick-Up Authorization Form](#) has been filled out.

## START & CORRALS

The race starts at 6:50am on Del Monte Ave at Camino El Estero in Downtown Monterey. Half Marathoners will be in designated corrals "Elite/Seeded" and "A" through "L" based on the predicted finish time given during registration. There will be a special Military Corral for Active Duty Military and Veterans between corrals B and C. Your corral letter is printed on your bib. Look for signs at the corral entrances with the letter of each corral. See page 5 for a start area map.

## OCEAN VIEW CHALLENGE

The Ocean View Challenge (OVC) is a special registration category to run Saturday's Pacific Grove Lighthouse 5K and Sunday's Monterey Bay Half Marathon. OVC runners will have two bibs, one for the 5K and one for the Half Marathon, with different bib numbers. If you registered separately for the Half Marathon and 5K, this is not considered an Ocean View Challenge registration. OVC runners will have a special logo on their bib to make them identifiable to race personnel at the finish. Ocean View Challenge participants can pick up their special finisher's medallion at the OVC tent Runner Refreshment area near the finish line.

## GEAR CHECK

There will be three gear check areas adjacent to each corral gate along Del Monte Avenue. After the race, gear bags will be available in the lot next to the runners' food tent. See map on page 9 for locations. Gear check drop-off closes race morning at 6:30 AM.

If you opt to use gear check, use only the bag provided to you at the Expo during packet pick-up or race morning at the start. Use the tear-off adhesive-backed "Gear Tag" found at the top of your race bib and affix it to the gear bag. Please do not put anything of value or any heavy liquids in your gear bag. We are not responsible for lost or stolen property. Items of clothing discarded at the start, on the course, or in any unclaimed gear bags will be donated to charity.

## AID STATIONS

There are eight aid stations on the course. Water and Lemon-Lime [Gatorade Endurance](#) are available at all stations. [GU](#) Energy Gel will be at the stations at miles 5.9 and 9.4. As part of our green initiative, all cups on the course are compostable. If you take a GU, be sure NOT to put the empty packet into a cup as we are composting all cups and food waste separately. Porta-potties and medical personnel will be at all stations. To minimize waste, we strongly encourage you to bring your own course hydration system. All aid stations are equipped with options to refill your personal hydration system. See page 4 for a course map.

## COURSE TIME LIMIT

We support walkers and slower runners but they are subject to the 3-1/2 hour course time limit, a 16-minute-mile pace. The course time limit begins when the last person crosses the timing mat at the start (approximately 7:23 AM). To help everyone finish under the limit, there are three "cut-off" points on the course. Connect with the "Ask Me" Team at the Expo for details about the three "cut-off" points along the course.

## POST-RACE INFORMATION

After crossing the finish line, you will be given a finisher's medal. There will be a picture opportunity with [MarathonFoto](#) with the beautiful Monterey harbor in the background. Following that, you will pass through the food tent and then pick up your gear bag if one was dropped off at a gear check area at the start. From there, you will proceed to Custom House Plaza-Monterey State Historic Park where you can unite with family and friends, enjoy the Cheers Garden and hot soup, view results and check out race merchandise for sale. There will be live music on the awards stage next to the Dali Expo. Be sure and stop to ring the "PR Bell" if you set a personal record.

The Awards Ceremony begins at 10 AM in the Finish Village. Prize money is available to the top eight overall male and female runners entered in the elite category. A total prize purse of over \$30,000 will be offered and will include a gender Equalizer Bonus.

Bike Valet and Gear Check will close at 11:30 AM and all bikes and gear bags must be removed by that time.

See page 5 for a finish area map.

# PARKING MAP



NOVEMBER 13, 2022  
DOWNTOWN  
MONTEREY

## **P** DOWNTOWN EAST / WEST GARAGE PARKING -----

Garage parking from before 5:30 AM and after 9 AM. From Highway 1 take exit 399 B (Munras Ave exit) for Downtown East and West garages. Take Munras Ave - L on Pearl St - R on Calle Principal - R on Franklin St to access the garages. From Pacific Grove take Pacific St - L on Franklin St.

## **P** TO MONTEREY PENINSULA COLLEGE (MPC) PARKING -----

Parking from 5 AM – 6:15 AM  
Take exit 401A from Highway 1, both north & southbound for MPC parking

## **P** TO DEL MONTE CENTER (DMC) PARKING -----

Parking 5 AM – 6:15 AM  
Take exit 399B (Munras Avenue) from Highway 1 for Del Monte Center parking. (located 1/2-mile south on Munras.)

## DROP OFF/PICK-UP LOCATIONS

On Pacific Street, near Monterey City Hall.

## RACE DAY DRIVING DIRECTIONS AND PARKING IN DOWNTOWN MONTEREY

**DOWNTOWN EAST & WEST PARKING GARAGES** The Garages are located on Franklin between Washington and Alvarado Streets. To park here you **MUST ARRIVE** by 5:30 AM. Parking is free until 11 AM.

Garage parking from before 5:30 AM and after 9 AM. From Highway 1 take exit 399 B (Munras Ave exit) for Downtown East and West garages. Take Munras Ave - L on Pearl St - R on Calle Principal - R on Franklin St to access the garages. From Pacific Grove take Pacific St - L on Franklin St.

**STREET PARKING** There is parking available on city streets. Many meters and surface lots ARE enforced on Sunday.

**FREE MONTEREY PENINSULA COLLEGE PARKING AND SHUTTLE** All day free parking is available at Monterey Peninsula College (MPC). Free shuttles will take runners from MPC to a drop-off near the race start every 10 minutes from 5 to 6:15 AM. Take exit 401A from Highway 1, both north & southbound for MPC Parking. Plan on arriving no later than 6 AM.

**FREE DEL MONTE SHOPPING CENTER PARKING AND SHUTTLE** All day free parking is available at Del Monte Center (DMC). Free shuttles will take runners from DMC to a drop-off area near the race start every 10 minutes from 5 to 6:15 AM. Take exit 399B from Highway 1 to Munras Ave. Del Monte Center is immediately on the right after exiting. Follow signs and directions for parking. Plan on arriving no later than 6 AM.

**RETURN SHUTTLES** Return shuttles to both MPC and DMC depart from Figueroa Street at the Recreation Trail (near the race start area) from 8:30 AM to 12 Noon. See the map above for the departure location.

**RUNNER DROP-OFFS** The designated runner drop-off location for private vehicles is on Pacific Street between Jefferson and Madison (in front of City Hall). It's a short five minute walk from here to the start on Del Monte.

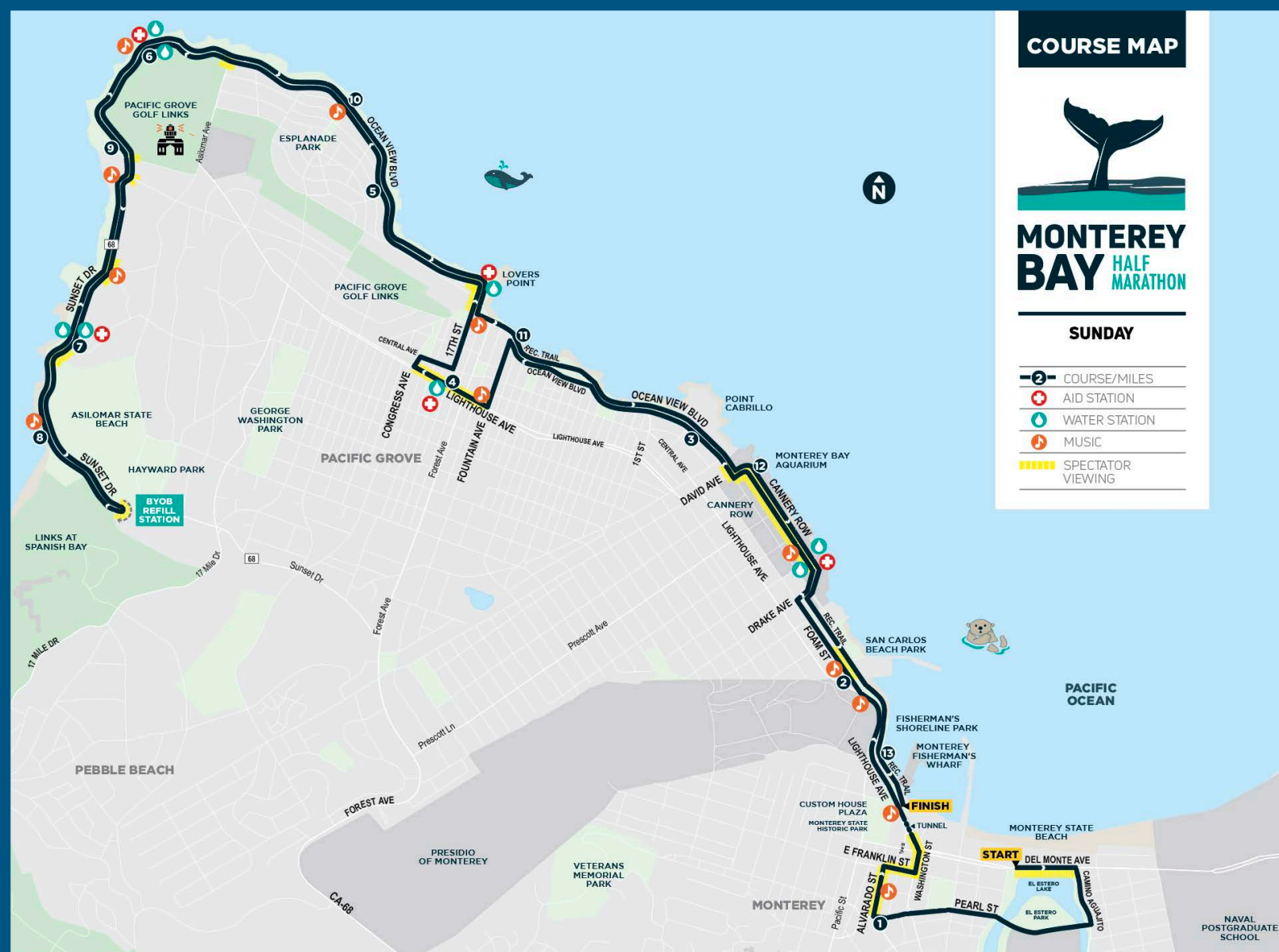
**BIKE VALET** Free secure bicycle parking is available for runners and spectators in the Wharf parking lot near the Gear Check area between 5:30 and 11:30 AM.

## COURSE MAP



### SUNDAY

|  |                   |
|--|-------------------|
|  | COURSE/MILES      |
|  | AID STATION       |
|  | WATER STATION     |
|  | MUSIC             |
|  | SPECTATOR VIEWING |



## HALF MARATHON COURSE INFORMATION

The Half Marathon begins on Del Monte Avenue at Camino El Estero in downtown Monterey. You will run east on Del Monte and then turn right on Camino Agujito and turn right again on Third Street. After crossing Camino El Estero, Third Street becomes Pearl Street. You'll continue on Pearl until Alvarado Street, where you'll turn right, and then make another right onto Franklin Street. You will turn left on Washington Street, cross Del Monte and pass through the Custom House Tunnel, which will feature a fun light and music show!

After emerging from the tunnel, you'll veer right onto Foam Street. From Foam it is a right turn onto Drake Street and then left onto Cannery Row. From Cannery Row, you will turn right on Wave Street which becomes Ocean View Blvd. in Pacific Grove. At Fountain Avenue, you will turn left and proceed to Lighthouse Avenue in downtown Pacific Grove and turn right then take another right at Central Avenue. At 17th Street, you will turn left and continue down to Ocean View Boulevard and Lovers Point.

The next six miles are run next to the Monterey Bay and the Pacific Ocean. Ocean View becomes Sunset Drive just past Asilomar Boulevard. You will turn around just past Asilomar Beach and then return the same way but in the ocean-side lane. At Lovers Point, you will turn onto the Recreation Trail and proceed east. You will turn left onto Cannery Row and again run down the Row to Drake then return to the Recreation Trail for a flat final half-mile. The course begins and finishes at sea level and is mostly flat with gently-

rolling hills. The total elevation gained and lost is 370 feet. The largest climb is about a 1/4-mile steady grade from 40 to 104-foot elevation at mile 3.7.

*Due to liability and safety concerns and the nature of the course, there are no animals, unofficial pacers, skates, skateboards, bikes, wheelchairs, hand cranks, strollers, knee scooters, baby joggers or children in backpacks, permitted on the course.*



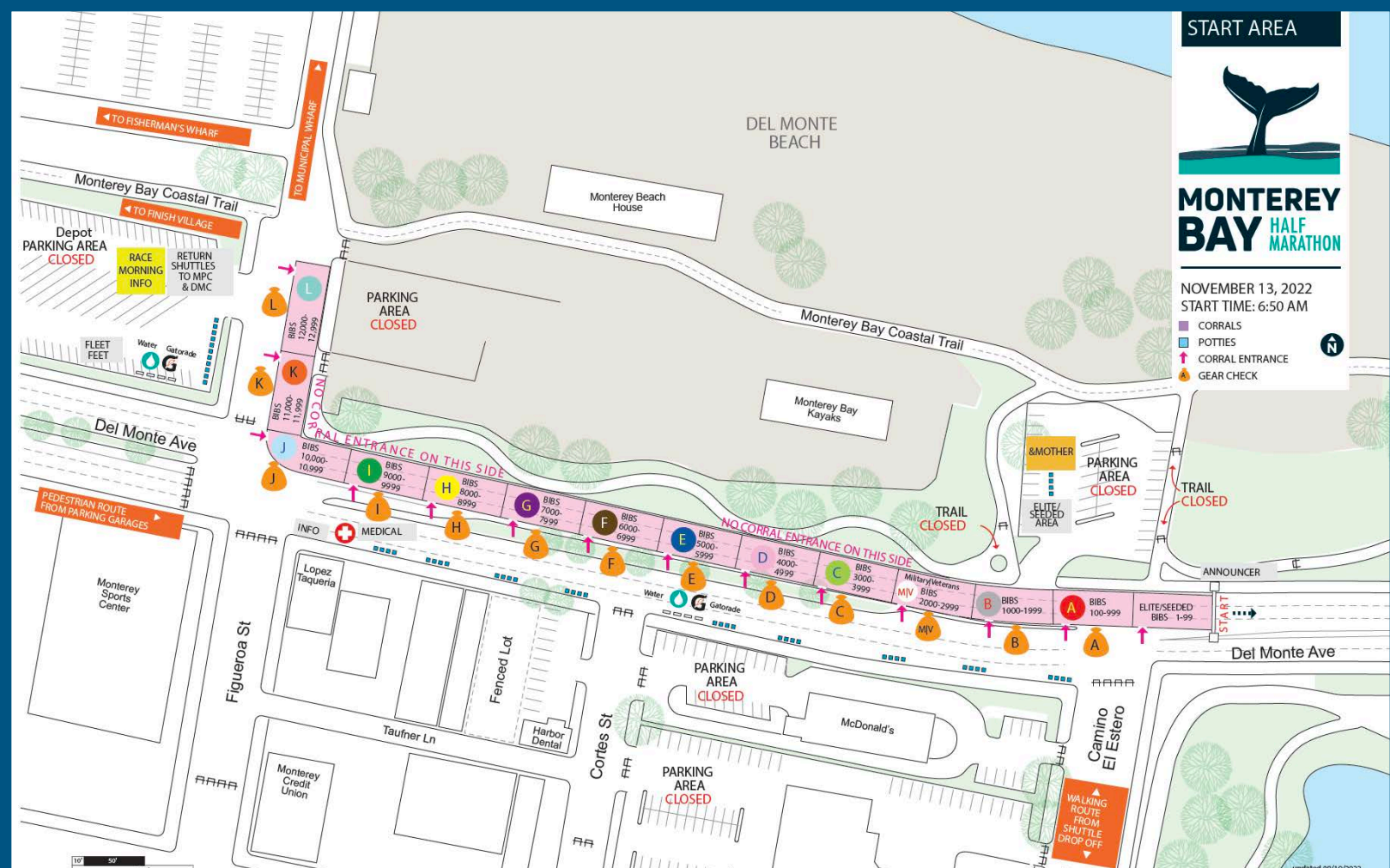


# START AREA



NOVEMBER 13, 2022  
START TIME: 6:50 AM

- CORRALS
- POTTIES
- ➔ CORRAL ENTRANCE
- GEAR CHECK

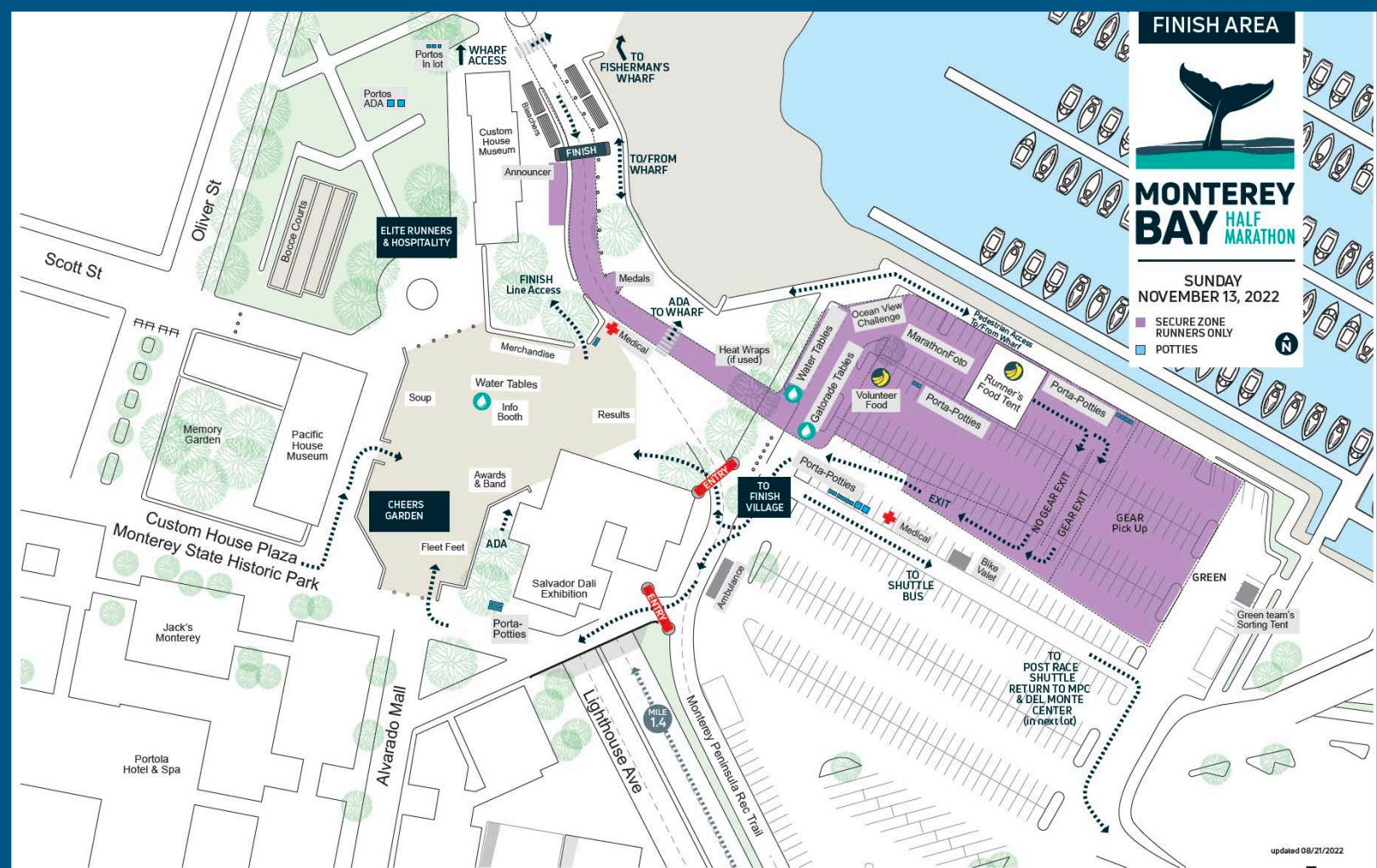


# FINISH AREA



SUNDAY  
NOVEMBER 13, 2022

- SECURE ZONE RUNNERS ONLY
- POTTIES





# BY-THE-BAY 3K & PACIFIC GROVE LIGHTHOUSE 5K

## Saturday, November 12

.....



### START & FINISH LOCATION

Both races start and finish on Ocean View Boulevard at Lovers Point Park in Pacific Grove. See the next page for a course map and start/finish venue map.

### START TIME

The 3K begins at 8:00 AM and the 5K at 8:30 AM in two waves. Wave 1 for those expected to run under a 10-minute mile pace and wave 2 for over a 10-minute pace.

### EVENT REGISTRATION

Bibs and participant shirts can be picked up at the Health & Fitness Expo on Friday, November 11th. A photo ID is required for packet pick up. The Expo is located at the Monterey Conference Center at 1 Portola Plaza in Monterey. Hours are noon to 6:00 PM on Friday. No dogs allowed at the Expo in the Monterey Conference Center (except service animals). If you are unable to pick up on Friday, there will be race morning pick up at Lovers Point Park beginning at 6:30 AM. If you are running the Ocean View Challenge, race morning pick up will be for your 5K bib only; you'll need to pick up your Half Marathon bib and shirt at the Health & Fitness Expo between 9:30 AM and 6 PM. There are no gear check provisions for the 5K or 3K.

### PETS, STROLLERS & HEADPHONES

For safety reasons, please leave the dogs, strollers/baby joggers, and headphones, iPods, or earbuds at home. Thank you.

### PARKING

There is parking available in the public lots in Pacific Grove or on the city streets. Be sure to note any parking enforcement signs and hours of enforcement. See attached parking map on the last page of this document for more information.

### COURSE

Both the 5K and 3K courses begin just west of Lovers Point Park on Ocean View Boulevard in Pacific Grove and are out-and-back. On the outbound section, you are in the water-side lane; after turning around, you are in the land-side lane. 5K runners turn around at Point Pinos near Lighthouse Avenue. 3K runners turn around at Coral Street. A detailed course map can be found on the next page.

### AID & WATER STATIONS

There will be two water/aid stations on the 5K course at 1.2 miles and 2.3 miles. The 3K station is on Ocean View Boulevard after the turnaround at Coral Street.

There will be water and post-race refreshments after the finish in Lovers Point Park.

### POST-RACE ACTIVITIES

The 5K awards ceremony begins at 9:30 AM at Lovers Point Park. Awards go three deep in five-year age divisions after 5-8, 9-11, 12-14 and 15-19. Awards are also presented to the overall male and female winners and masters (age 40 and over) male and female winners. Awards are determined by chip time.

All 5K and 3K finishers receive medallions. The 3K is timed but non-competitive. There are no overall or age division awards in the 3K.

Pacific Grove Kiwanis sponsors a \$10 pancake breakfast and Community Hospital of the Monterey Peninsula will offer interactive activities for children and youth.





## 5K/3K START AND FINISH AREA

BY-THE-BAY 3K  
START TIME: 8:00 AM  
PACIFIC GROVE  
LIGHTHOUSE 5K  
START TIME: 8:30 AM

SATURDAY  
NOVEMBER 12, 2022  
■ SECURE ZONE  
RUNNERS ONLY  
■ POTTIES



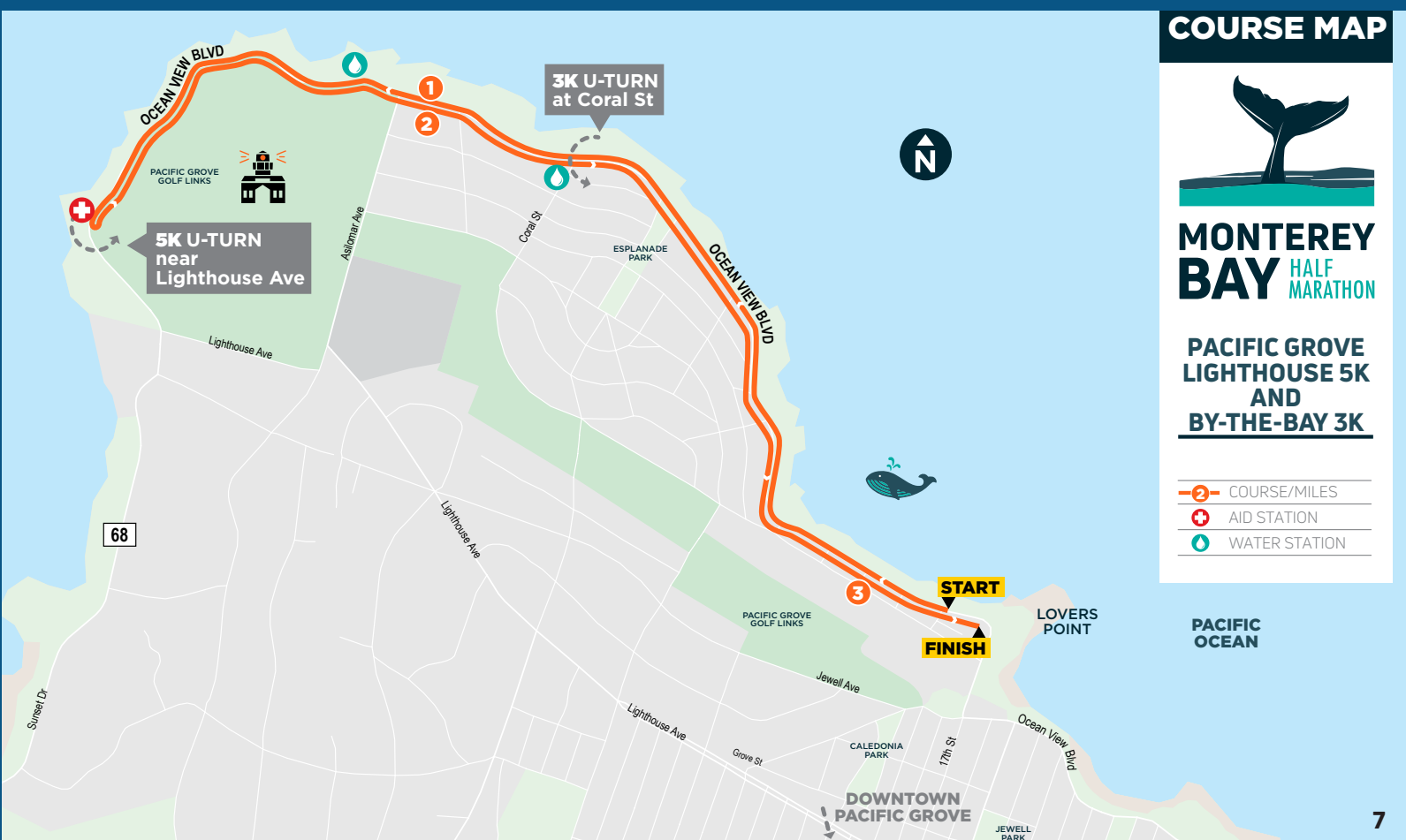
## COURSE MAP



**MONTEREY BAY** HALF MARATHON

**PACIFIC GROVE LIGHTHOUSE 5K AND BY-THE-BAY 3K**

- 2 — COURSE/MILES
- + AID STATION
- WATER STATION





xx Closed Intersections

— No parking anytime

..... 20 min-1 hour parking  
(beginning at 9am)

— 90 min-2 hour parking  
(beginning at 9am)

Public parking lot  
Private parking lot

By-the-Bay 3K

Pacific Grove Lighthouse 5K

Pacific Grove, CA

START, FINISH, AND  
PARKING AREAS

Lovers Point Park  
Pre and Post race  
activities at  
Lovers Point Park  
(portable toilets,  
awards, refreshments)

